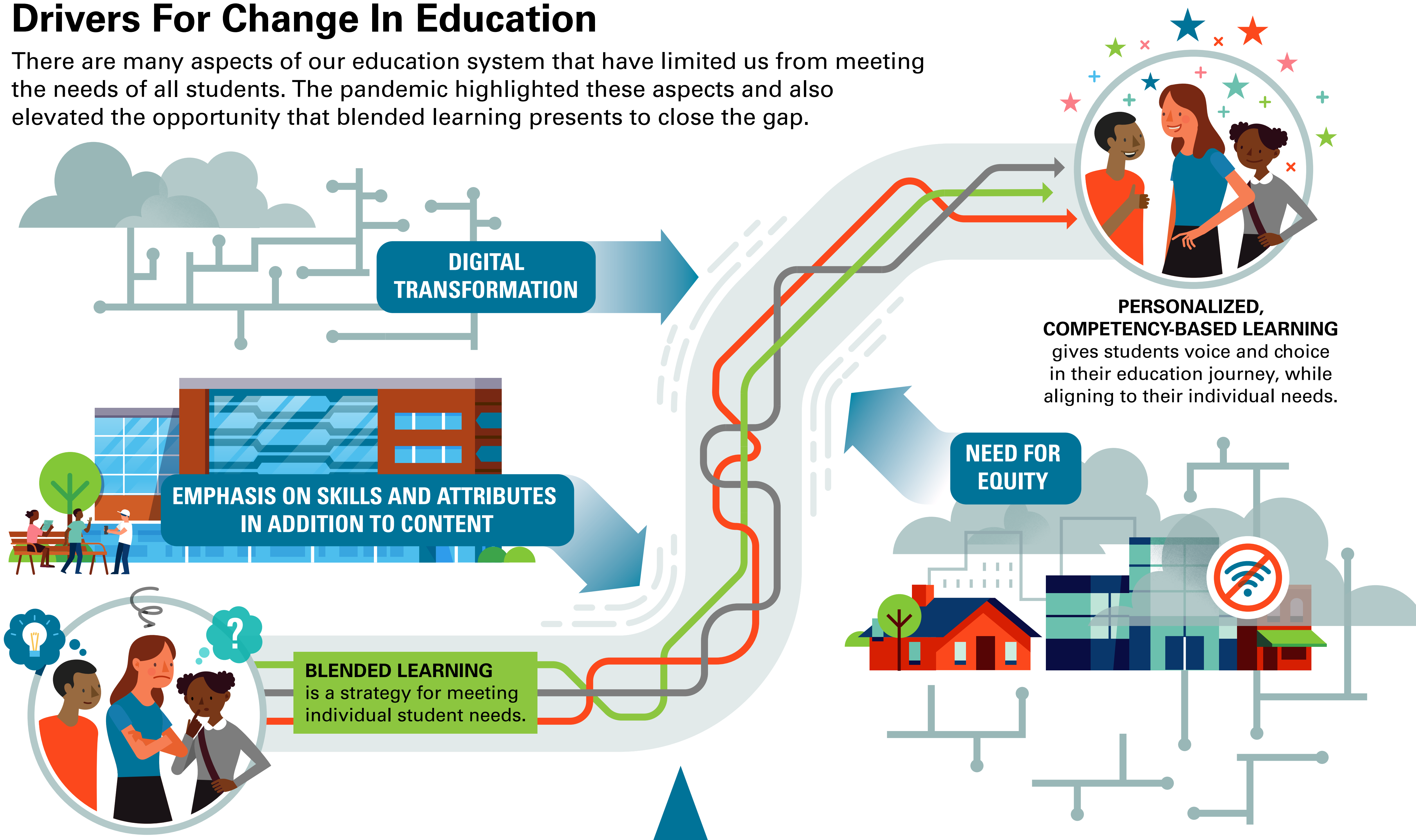


# Chart Your Path to Personalized, Competency-Based Learning

Meeting the needs of each student through personalized, competency-based learning (PCBL) is more important now than ever. Blended Learning can help us achieve this vision for learning.

## Drivers For Change In Education

There are many aspects of our education system that have limited us from meeting the needs of all students. The pandemic highlighted these aspects and also elevated the opportunity that blended learning presents to close the gap.



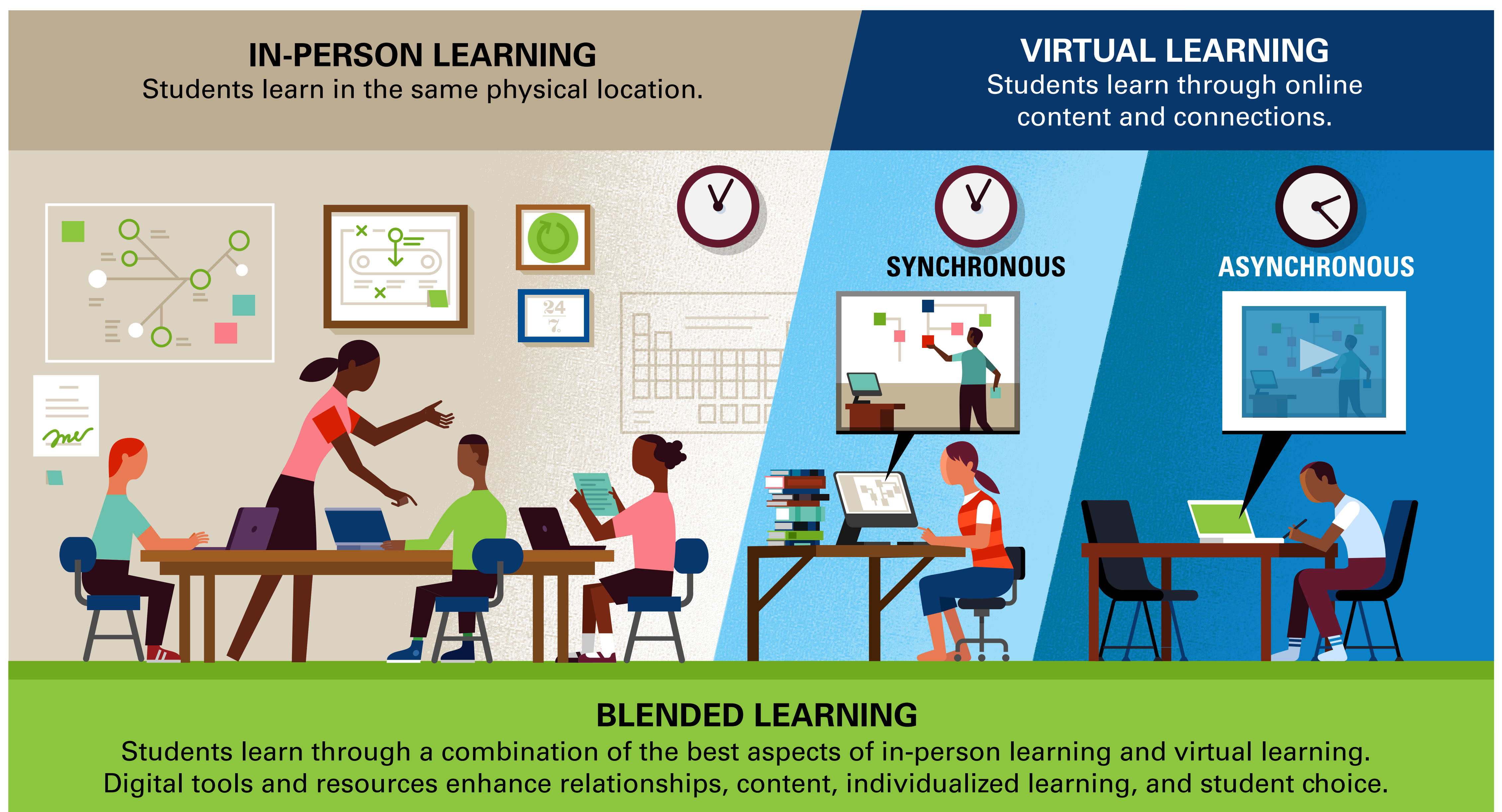
## Assess Your Options

There is no one-size-fits-all path to PCBL. SETDA has developed a tool to help you chart your district's path by exploring four key areas:



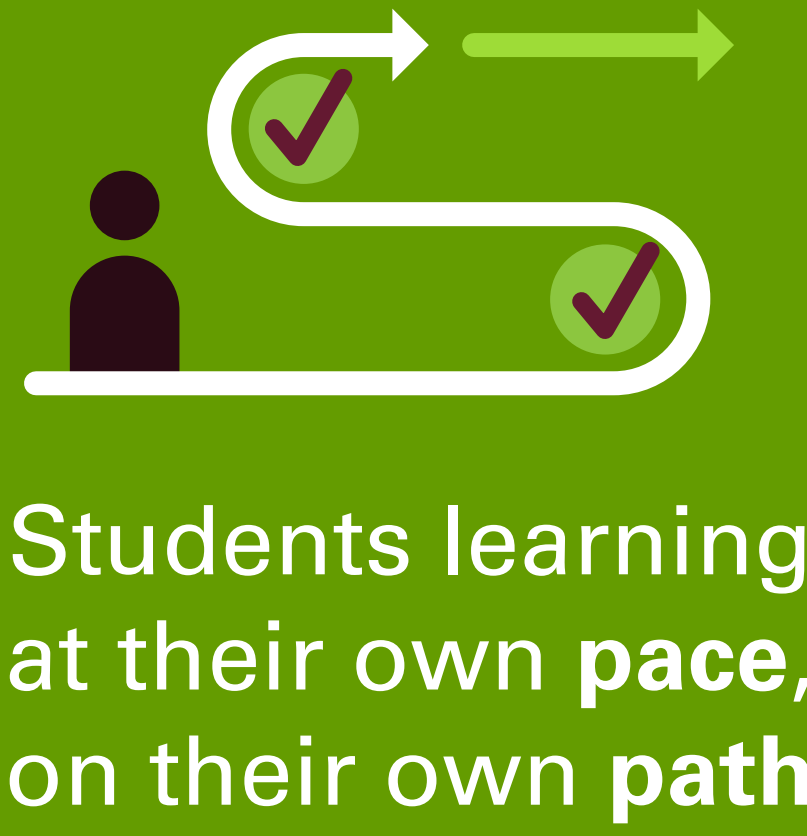
## Consider Instructional Delivery Models

Instructional delivery models are an important consideration as you assess your options. While there are many recent and relevant terms used for these models, there are three main types to consider.



## Embrace Blended Learning

Blended learning can be an effective solution that enables:



## Blended Learning benefits all stakeholders in a student's education journey

